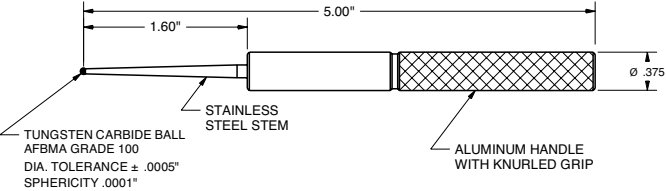
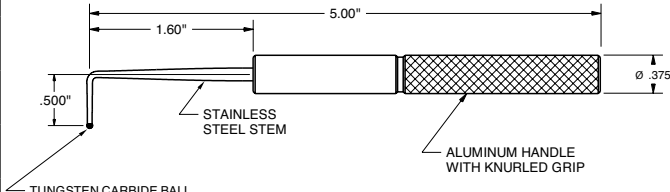


Hand Held Spherical Ball-Tipped Scribes for Surface Defect Analysis

Surface Defect Scriber – Straight	NO CERTIFICATION		NIST CERTIFIED
	A Ball Diameter	Part Number	Part Number
 <p>TUNGSTEN CARBIDE BALL AFBMA GRADE 100 DIA. TOLERANCE ± .0005" SPHERICITY .0001"</p> <p>1.60"</p> <p>5.00"</p> <p>STAINLESS STEEL STEM</p> <p>ALUMINUM HANDLE WITH KNURLED GRIP</p> <p>Ø .375"</p> <p>For NIST Certified Scriber Styli a Long-Form NIST Traceable Certificate of Calibration per ISO 17025 Accreditation Standards will be Provided for the Carbide Ball Tip Only, and a Non-Traceable Certificate of Conformance will be Provided for Entire Part. Scriber Handle will be Engraved with Matching NIST Certificate Serial Number</p> <p>A Sample Certificate is available upon Request</p>	.005"	SDS-0050	SDS-0050-NIST CERT
	.007"	SDS-0070	SDS-0070-NIST CERT
	.010"	SDS-0100	SDS-0100-NIST CERT
	.015"	SDS-0150	SDS-0150-NIST CERT
	.020"	SDS-0200	SDS-0200-NIST CERT
	.025"	SDS-0250	SDS-0250-NIST CERT
	.030"	SDS-0300	SDS-0300-NIST CERT
	.035"	SDS-0350	SDS-0350-NIST CERT
	1.0mm	SDS-1.0mm	SDSRA-1.0mm-NIST CERT
	.040"	SDS-0400	SDS-0400-NIST CERT
	.045"	SDS-0450	SDS-0450-NIST CERT
	.050"	SDS-0500	SDS-0500-NIST CERT
	1.5mm	SDS-1.5mm	SDS-1.5mm-NIST CERT
	.060"	SDS-0600	SDS-0600-NIST CERT
	.070"	SDS-0700	SDS-0700-NIST CERT
	2.0mm	SDS-2.0mm	SDS-2.0mm-NIST CERT
	.080"	SDS-0800	SDS-0800-NIST CERT
	.090"	SDS-0900	SDS-0900-NIST CERT
	.100"	SDS-1000	SDS-1000-NIST CERT
	.120"	SDS-1200	SDS-1200-NIST CERT
.160"	SDS-1600	SDS-1600-NIST CERT	
.240"	SDS-2400	SDS-2400-NIST CERT	

Hand Held Spherical Ball-Tipped Scribers for Surface Defect Analysis			
Surface Defect Scriber – Right Angle		NO CERTIFICATION	NIST CERTIFIED
	A Ball Diameter	Part Number	Part Number
 <p>TUNGSTEN CARBIDE BALL AFBMA GRADE 100 DIA. TOLERANCE ± .0005" SPHERICITY .0001"</p> <p>.500"</p> <p>1.60"</p> <p>5.00"</p> <p>0.375"</p> <p>STAINLESS STEEL STEM</p> <p>ALUMINUM HANDLE WITH KNURLED GRIP</p> <p>For NIST Certified Scriber Styli a Long-Form NIST Traceable Certificate of Calibration per ISO 17025 Accreditation Standards will be Provided for the Carbide Ball Tip Only, and a Non-Traceable Certificate of Conformance will be Provided for Entire Part. Scriber Handle will be Engraved with Matching NIST Certificate Serial Number</p> <p>A Sample Certificate is available upon Request</p>	.005"	SDSRA-0050	SDSRA-0050-NIST CERT
	.007"	SDSRA-0070	SDSRA-0070-NIST CERT
	.010"	SDSRA-0100	SDSRA-0100-NIST CERT
	.015"	SDSRA-0150	SDSRA-0150-NIST CERT
	.020"	SDSRA-0200	SDSRA-0200-NIST CERT
	.025"	SDSRA-0250	SDSRA-0250-NIST CERT
	.030"	SDSRA-0300	SDSRA-0300-NIST CERT
	.035"	SDSRA-0350	SDSRA-0350-NIST CERT
	1.0mm	SDSRA-1.0mm	SDSRA-1.0mm-NIST CERT
	.040"	SDSRA-0400	SDSRA-0400-NIST CERT
	.045"	SDSRA-0450	SDSRA-0450-NIST CERT
	.050"	SDSRA-0500	SDSRA-0500-NIST CERT
	1.5mm	SDSRA-1.5mm	SDSRA-1.5mm-NIST CERT
	.060"	SDSRA-0600	SDSRA-0600-NIST CERT
	.070"	SDSRA-0700	SDSRA-0700-NIST CERT
	2.0mm	SDSRA-2.0mm	SDSRA-2.0mm-NIST CERT
	.080"	SDSRA-0800	SDSRA-0800-NIST CERT
	.090"	SDSRA-0900	SDSRA-0900-NIST CERT
	.100"	SDSRA-1000	SDSRA-1000-NIST CERT
	.120"	SDSRA-1200	SDSRA-1200-NIST CERT
.160"	SDSRA-1600	SDSRA-1600-NIST CERT	
.240"	SDSRA-2400	SDSRA-2400-NIST CERT	

Contour Styli for Form Measurement	
Replacement Stylus Tip for Mitutoyo Contour Measurement	Part Number
	CPM354884
	Replacement for Mitutoyo Part Number: 354884 or SPH-71

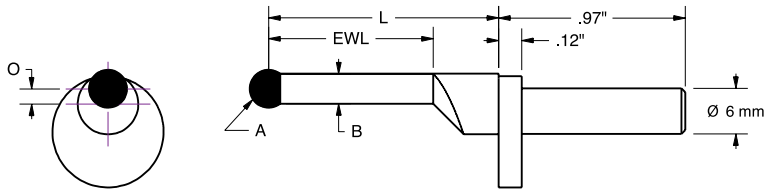
Contour Styli for Form Measurement	
Replacement Stylus Tip for Mahr (MarSurf) Contour Measurement	Part Number
	CPM6850286
	Replacement for Mahr Part Number: 6850286
	CPM6851517
	Replacement for Mahr Part Number: 6851517

Contour Styli for Form Measurement	
Replacement Stylus Tip for Zeiss/Accretech/TSK Contour Measurement	Part Number
<p>.945in [24.0mm] .315in [8.0mm] .079 12° TUNGSTEN CARBIDE .001" TIP RADIUS ϕ.118in [3.0mm] ϕ.157in [4.0mm]</p>	<p>CPDM45502</p> <p>Replacement for Zeiss/Accretech/TSK Part Number: DM45502</p>

Contour Styli for Form Measurement	
Replacement Stylus Tip for Zeiss/Accretech/TSK Contour Measurement	Part Number
<p>.945in [24.0mm] .315in [8.0mm] .079 24° R.001 TUNGSTEN CARBIDE ϕ.118in [3.0mm] ϕ.157in [4.0mm]</p>	<p>CPDM45505</p> <p>Replacement for Zeiss/Accretech/TSK Part Number: DM45505</p>

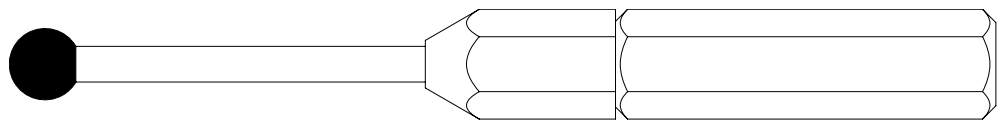
Contour Styli for Form Measurement	
Special order or Refurbished Stylus Tips	
<p>A variety of other contour replacement stylus tips are available through special order. We can also refurbish your damaged stylus tips (except those listed as standard catalog items). Upon request, replacement stylus tips can be manufactured from hardened high speed steel. Damaged surface roughness testing styli and/or worn diamond tips can also be repaired.</p>	

Height Gauge Ball Tip Offset Probes (for Brown & Sharpe Micro-Hite)



A Ball Diameter	B Stem Diameter	L Length	EWL	O Offset	Ball Material	Part Number
1.0mm	.031"	1.203"	.276"	.166"	Carbide	MH-220C
					Ruby	MH-220R
1.5mm	.039"	1.203"	.354"	.166"	Carbide	MH-221C
					Ruby	MH-221R
2.0mm	.059"	1.203"	.461"	.155"	Carbide	MH-222C
					Ruby	MH-222R
3.0mm	.078"	1.203"	.461"	.155"	Carbide	MH-223C
					Ruby	MH-223R
5.0mm	.156"	1.195"	.855"	.116"	Carbide	MH-224C
					Ruby	MH-224R

Custom Ball Gauges Made To Your Specifications – Available In Single Or Double End



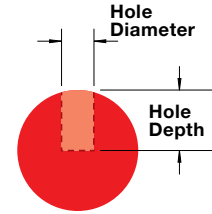
Ruby Balls

Synthetic Ruby (Sapphire)

AFBMA Grade 10
Basic Diameter Tolerance $\pm .0001$ "
Sphericity .00001"



Ruby Ball
without Hole



Ruby Ball
with Blind Hole

Available with or without Hole

Ball Diameter	Hole Diameter x Depth	Part Number
0.3mm	No Hole	RB.3MM
0.5mm	No Hole	RB.5MM
0.6mm	No Hole	RB.6MM
0.7mm	No Hole	RB.7MM
1/32"	No Hole	RB.0312
1/32"	.013" x .015"	RB.0312H
1.0mm	No Hole	RB1.0MM
1.0mm	.015" x .020"	RB1.0MMH
3/64"	No Hole	RB.0469
3/64"	.018" x .025"	RB.0469H
1.35mm	No Hole	RB1.35MM
1.35mm	.018" x .025"	RB1.35MMH
1.5mm	No Hole	RB1.5MM
1.5mm	.018" x .030"	RB1.5MMH
1/16"	No Hole	RB.0625
1/16"	.018" x .030"	RB.0625H
2.0mm	No Hole	RB2.0MM
2.0mm	.025" x .040"	RB2.0MMH
3/32"	No Hole	RB.0937
3/32"	.025" x .045"	RB.0937H
2.5mm	No Hole	RB2.5MM
2.5mm	.025" x .045"	RB2.5MMH
3.0mm	No Hole	RB3.0MM
3.0mm	.031" x .059"	RB3.0MMH
1/8"	No Hole	RB.1250
1/8"	.031" x .059"	RB.1250H
3.5mm	No Hole	RB3.5MM
3.5mm	.031" x .059"	RB3.5MMH

Ball Diameter	Hole Diameter x Depth	Part Number
5/32"	No Hole	RB.1562
5/32"	.059" x .080"	RB.1562H
4.0mm	No Hole	RB4.0MM
4.0mm	.059" x .080"	RB4.0MMH
.1875"	No Hole	RB.1875
.1875"	.059" x .080"	RB.1875H
5.0mm	No Hole	RB5.0MM
5.0mm	.059" x .080"	RB5.0MMH
7/32"	No Hole	RB.2187
7/32"	.059" x .100"	RB.2187H
6.0mm	No Hole	RB6.0MM
6.0mm	.059" x .120"	RB6.0MMH
1/4"	No Hole	RB.2500
1/4"	.059" x .120"	RB.2500H
7.0mm	No Hole	RB7.0MM
7.0mm	.059" x .120"	RB7.0MMH
9/32"	No Hole	RB.2812
9/32"	.078" x .140"	RB.2812H
5/16"	No Hole	RB.3125
5/16"	.078" x .156"	RB.3125H
8.0mm	No Hole	RB8.0MM
8.0mm	.078" x .156"	RB8.0MMH
9.0mm	No Hole	RB9.0MM
9.0mm	.078" x .156"	RB9.0MMH
3/8"	No Hole	RB.3750
3/8"	.098" x .187"	RB.3750H
10.0mm	No Hole	RB10.0MM
10.0mm	.098" x .187"	RB10.0MMH